

Cape Villas

DUNSBOROUGH



Idyllic bush hideaway holiday homesites on the edge of town!



Tel: 9755 3251



PROJECT DEVELOPMENT

Tel: 9756 7770



BLUEWATER BUILDING CO

Tel: 9756 7993

CAPE VILLAS DUNSBOROUGH From \$414,500



- Fantastic Location
- Great Specification
- Management in Place
- Great Return on Investment with Depreciation Schedules Already Complete
- Complete "Turn Key" Options
- Shadow Line Cornice
- Complete Internal Wall Painting
- Corian Tops to Kitchen
- High Quality Taps and Fittings
- Free Interior Designer Session
- Fixed Price Building Contract
- Complete Turn Key Service
- Complete Floor Covering & Window Treatment package





Fabulous, idyllic, bush hideaway, holiday home development on a pretty hillside location on the edge of town, with ocean views. Only approximately 1.8kms from Dunsborough's beautiful sandy beaches and a kilometer from the town's shopping centre. Home and land packages from \$414,150!

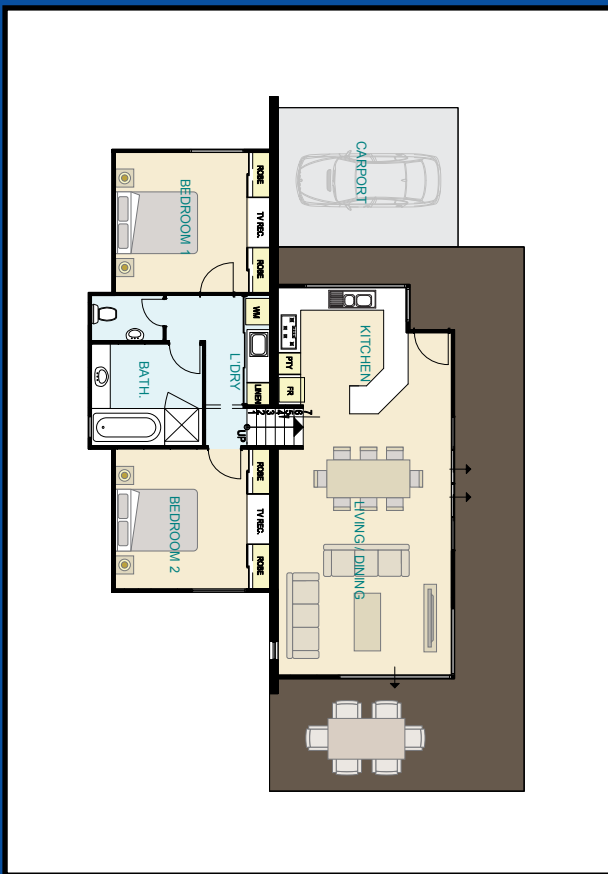
Experience the peace and tranquility of this idyllic setting whilst having the modern facilities of Western Australia's premier holiday town just a couple of minutes along a paved cycleway. Wind down, away from the workday world in a paradise that is as restful or as active as your mood dictates. The villas are situated in pristine, undulating bushland, with a profusion of wildflowers growing over the lots and along the meandering creek that flows through the common property.

Only 24 strata lots remaining in this unique, Tourist zoned development. Some villas will have views between stately Jarrahs to the beckoning waters of Geographe Bay. Each lot will be serviced with underground power, reticulated water, sewerage and an internal road system. All the planning has been done to ensure that the complex is in keeping with the amenity of its wooded sites and purchaser each has an architectural villa design with building envelope to diminish the developments impact on the bushland. The development has a seamless flow from nature and fits as snugly into the environment as the vegetation that abound throughout the property.







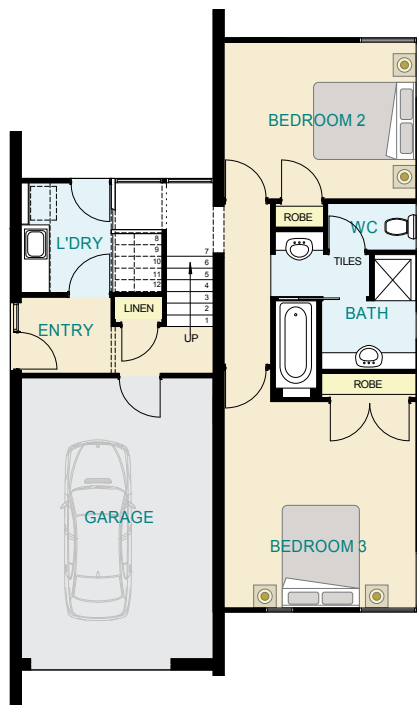


Unit Type 2

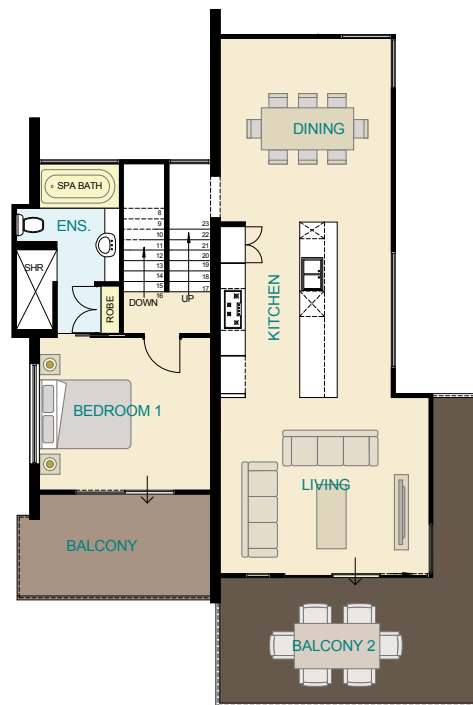




Ground Floor

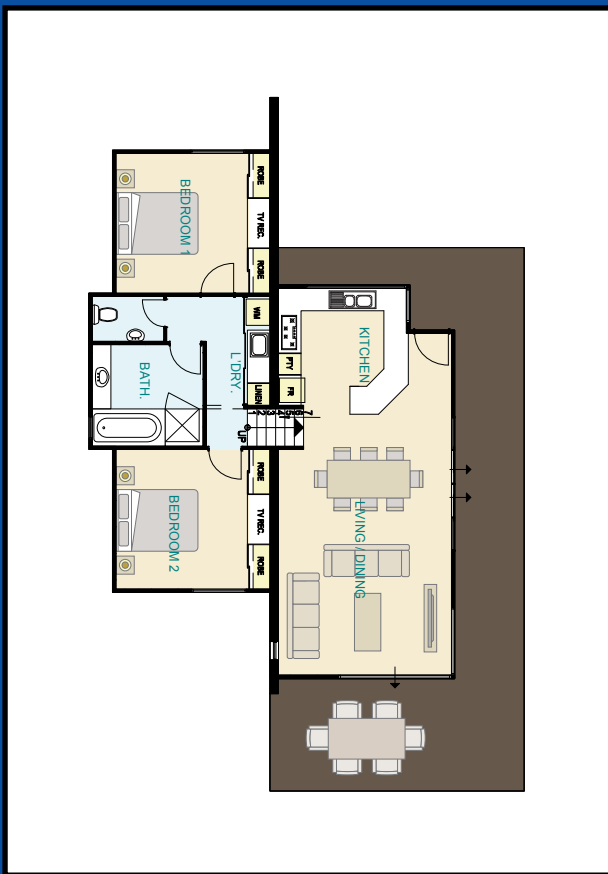


Upper Floor



Unit Type 1



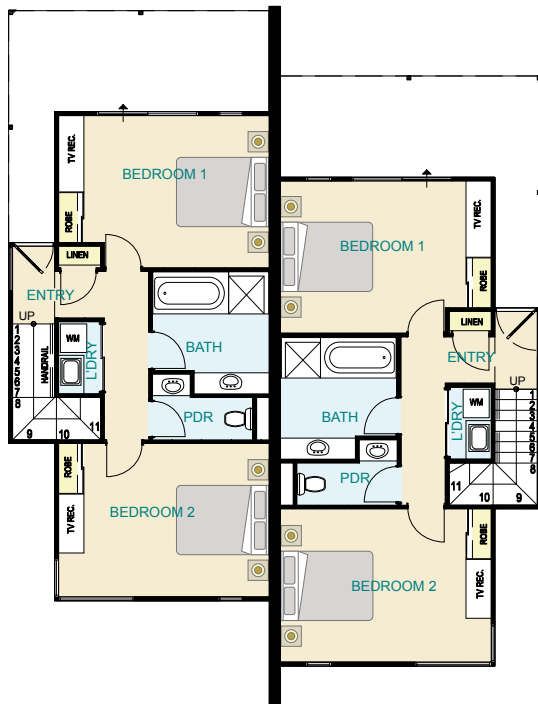


Unit Type 2a

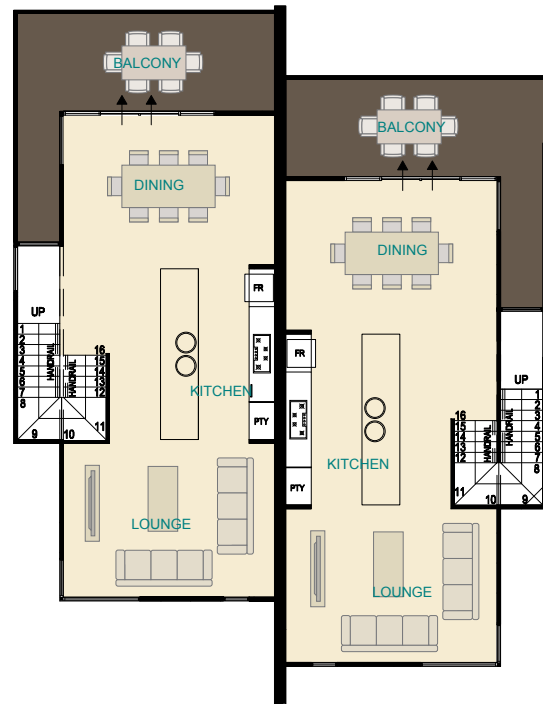




Ground Floor



Upper Floor

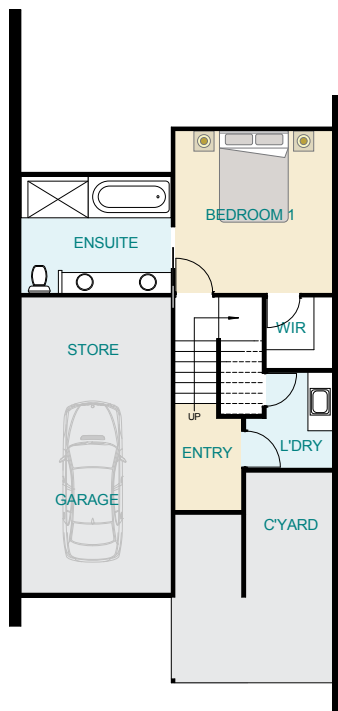


Unit Type 3

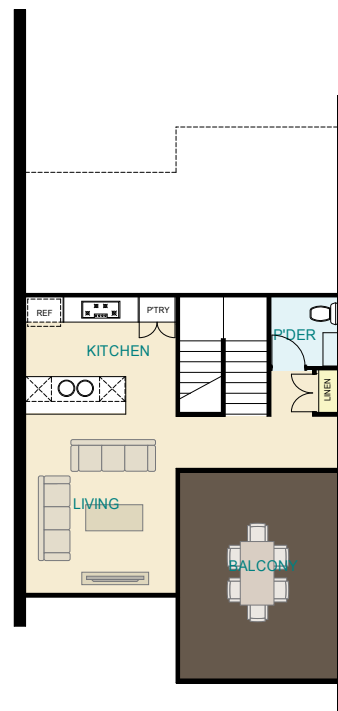




Ground Floor

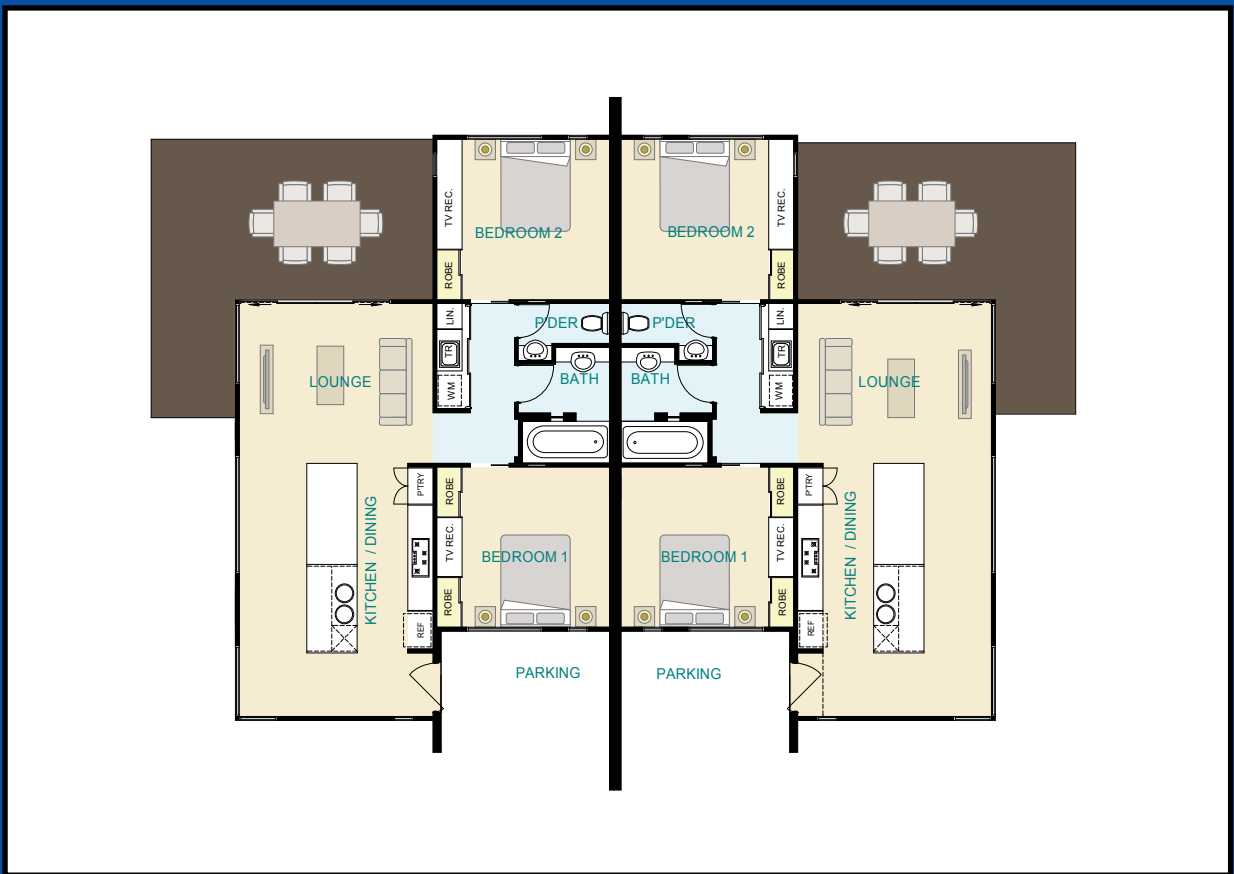


Upper Floor



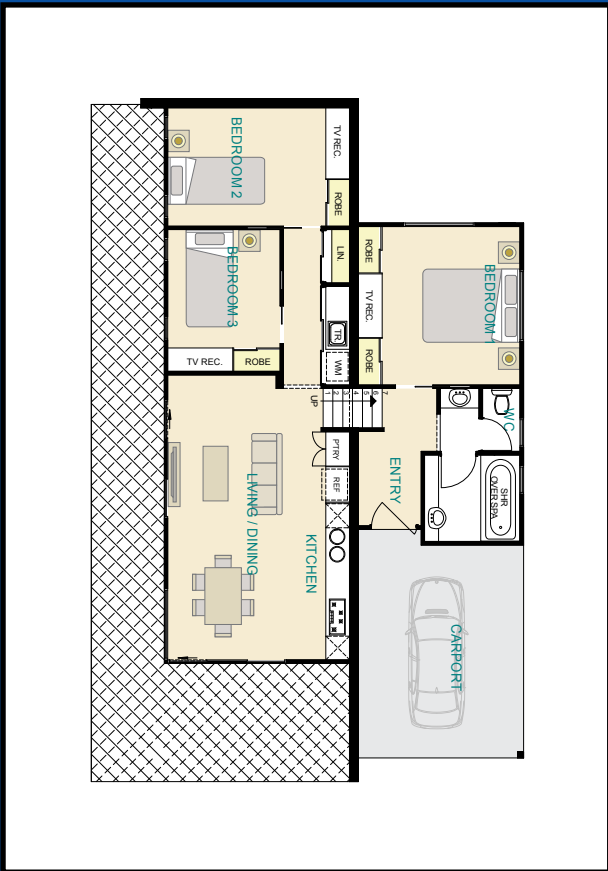
Unit Type 4





Unit Type 5





Unit Type 6



CAPE VILLAS

Estimate on electrical package

Price Indication as of September 2008

OPTIONAL

Fridge	<i>Westinghouse 430L bottom mount, fingerprint resistant ss</i>	\$ 1,600.00
Dishwasher	<i>Fisher & Paykel brushed ss electronic, 4* rating</i>	\$ 900.00
Washing machine / dryer	<i>LG 7kg washer / 4kg dryer combo, 4* rating</i>	\$ 1,149.00
Ironing system	<i>Robin Hood, price estimated only</i>	\$ 350.00
Ironing system	<i>Breville Steam Iron, 2400 watts</i>	\$ 47.95
TV - lounge	<i>Samsung 40" LCD with HD tuner</i>	\$ 1,339.00
TV - bedroom	<i>Samsung 32" LCD with HD tuner</i>	\$ 1,289.00
TV - bedroom	<i>Samsung 32" LCD with HD tuner</i>	\$ 1,289.00
Microwave	<i>Panasonic 32L, 1100 watt, ss finish</i>	\$ 269.00
BBQ	<i>Estimate only</i>	\$ 620.00
Toaster	<i>Breville 4 slice toaster, ss</i>	\$ 89.00
Kettle	<i>Breville Nova cordless, 1.7L</i>	\$ 52.10
Sandwich press	<i>Estimate only</i>	\$ 75.00
Phone	<i>Panasonic 5.8GHZ digital cordless phone page (2 handsets)</i>	\$ 169.00
Vacuum	<i>Nilfisk Bagless Combat vacuum, 2200 watts</i>	\$ 269.00
Hair dryer	<i>Remington Salon Collection hair dryer, 2000 watts</i>	\$ 54.95
Stereo	<i>Panasonic Micro Hi-Fi, 5 disc with MP3 playback</i>	\$ 249.00
DVD	<i>Philips DVD player / recorder</i>	\$ 189.00
Total		\$ 10,000.00

NOTE: FURNITURE PACKAGES ALSO AVAILABLE





Cape Villas, Dunsborough Capex Developments



bathroom life

Contact: Jane Larsson

Reece Bathroom Life

Tel: (08) 9284 6300

Fax: (08) 9284 2398

Email: jane.larsson@reece.com.au

“Your Bathroom. Your Life”

Kitchen



DAMANI DAO9003 SINGLE OVEN

- Product Code: 2010488
- 90cm
- Multifunction
- Stainless Steel



DAMANI DACG9001 COOKTOP

- Product Code: 2010487
- 90cm
- 5 Burner
- Stainless Steel



DAMANI DAH9000 CANOPY RANGEHOOD

- Product Code: 2010487
- 90cm
- Twin
- Stainless Steel



Kitchen



AFA FLOW DOUBLE UNDERMOUNT SINK

- Product Code: 2000396
- 802mm x 454mm
- 0 Tap Holes
- Stainless steel



TEKNOBILI OZ T2 SINK MIXER

- Product Code: 192335
- 4 Star WELS rating, 7.5L/ Min
- Chrome

3



“Your Bathroom. Your Life”

Ensuite



LIANO VANITY BASIN

- Product code: 1807381
- 415mm x 415mm
- 1 Tap Hole
- White



MIZU 1500 EXTENDED BASIN MIXER

- Product Code: 2202216
- 4 Star WELS rating, 7.5L/ Min
- Chrome

4



“Your Bathroom. Your Life”

Ensuite



DOMAINE OVAL SPA

- Product Code: 2006801
- 1790mm x 890mm
- Includes Waste (204478)
- White

5



“Your Bathroom. Your Life”

Ensuite



MIZU 1500 SHOWER MIXER

- Product Code: 2202133
- Chrome



MIZU BATH OUTLET

- Product Code: 2260904
- 210mm
- Chrome



Ensuite



PORCHER CYGNET BTW SQ/CISTERN SUITE

- Product Code: 9500802
- 4 Star WELS rating
- S or P Trap
- White

7



“Your Bathroom. Your Life”

Ensuite



ESCAPE SATINJET RAIL SHOWER

- Product Code: 2240820
- 3 Star WELS rating, 9L/ Min
- Chrome

8



“Your Bathroom. Your Life”

Ensuite



SQUARE TOP TRAPSCREW GRATE

- Product Code: 202293
- 80mm
- Chrome



Ensuite



MIZU 1500 GLASS SHELF

- Product Code: 2202027
- Chrome / Glass



MIZU 1500 TOWEL BAR

- Product Code: 2202017
- Chrome



Ensuite



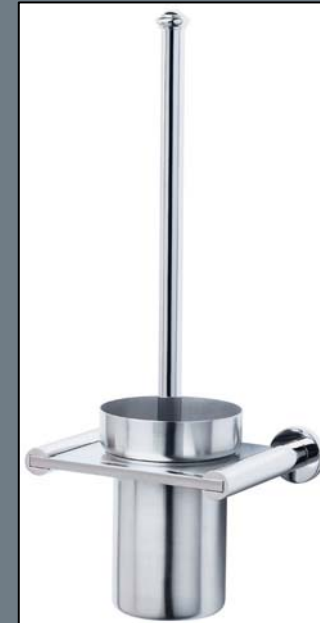
MIZU 1500 TOWEL RING

- Product Code: 2202025
- Chrome



MIZU 1500 LOOP
TOILETROLL HOLDER

- Product Code: 2202094
- Chrome / Glass



MIZU 1500 TOILET
BRUSH & HOLDER

- Product Code: 2202028
- Chrome



Bathroom



LIANO VANITY BASIN

- Product code: 1807381
- 415mm x 415mm
- 1 Tap Hole
- White



MIZU 1500 EXTENDED BASIN MIXER

- Product Code: 2202216
- 4 Star WELS rating, 7.5L/ Min
- Chrome

12



“Your Bathroom. Your Life”

Bathroom



STARLETT PRESSED STEEL BATH

- Product Code: 2001750
- 1745mm x 798mm
- Includes Waste (204478)
- White

13



“Your Bathroom. Your Life”

Bathroom



ESCAPE SATINJET RAIL SHOWER

- Product Code: 2240820
- 3 Star WELS rating, 9L/ Min
- Chrome

16



“Your Bathroom. Your Life”